



## Focus: Day of Mourning



### Symbol adopted

CUPE also proposed and adopted the canary in a cage as the internationally recognized symbol for the **Day of Mourning**, based on the canaries taken into coal mines in the 19th Century.



### We're on the web!

Visit us at

[www.556.cupe.ca](http://www.556.cupe.ca)

**April 28** is the **National Day of Mourning** for workers killed, injured or who become ill as a result of unsafe working conditions.

The Day of Mourning was founded based on a resolution written by CUPE's National Health and Safety Committee in 1984. What began through the efforts of Canada's labour movement is now observed in more than 100 countries.

On April 28 Canadians from coast to coast to coast will hold ceremonies to recognize workers who have lost their lives in 2010.

Among the many workers who will be remembered on April 28, here in B.C. CUPE members will mourn and remember Jo-Ann Fuller and Ivan Polivka, two paramedics who died in the line of duty on October 19<sup>th</sup>. ■

## Announcements



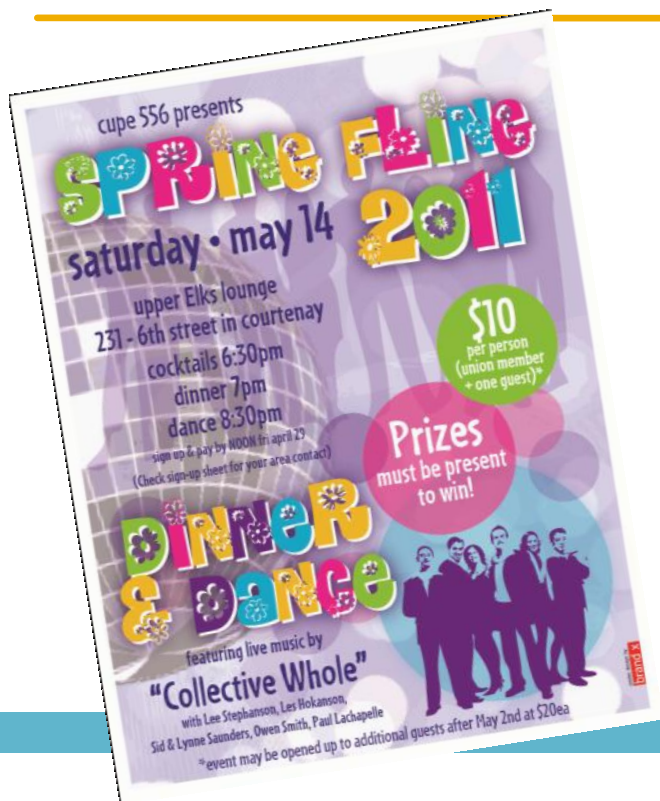
### Bill Berndt retires

Lisa McPherson, Courtenay Unit Vice President presenting Bill with a cheque of \$150 from CUPE 556. Congratulations to Bill Berndt on his retirement. Bill, may your retirement be like the experience of a kid being out of school for the summer — but the summer never ends. ■



### Oliver Brockel Madsen

Tyler from the City of Courtenay engineering department and his wife Sarah Madsen would like to introduce to their new son Oliver Brockel Madsen. Oliver was born on March 21<sup>st</sup> and weighed 7lb 14 oz. Congratulations to the proud parents. ■



### Suggestion or submission?

E-mail us at [cupe556@members.cupe.ca](mailto:cupe556@members.cupe.ca)

local 556  
cupe  connector

## CUPE 556

**Telephone**  
250-338-2447  
(leave message)

**Email**  
[cupe556@members.cupe.ca](mailto:cupe556@members.cupe.ca)

**Address**  
496-10th Street  
PO Box 3454  
Courtenay, BC V9N 5N5

**Website**  
[www.556.cupe.ca](http://www.556.cupe.ca)